

Work flows faster. Information in. Documents out. Copies to scans. Paper to editable files. E-mail to shared folders – attachments included. With finished reports, manuals, newsletters, even booklets on demand. Wish you could work in a world like that? You're ready for **Di470.**



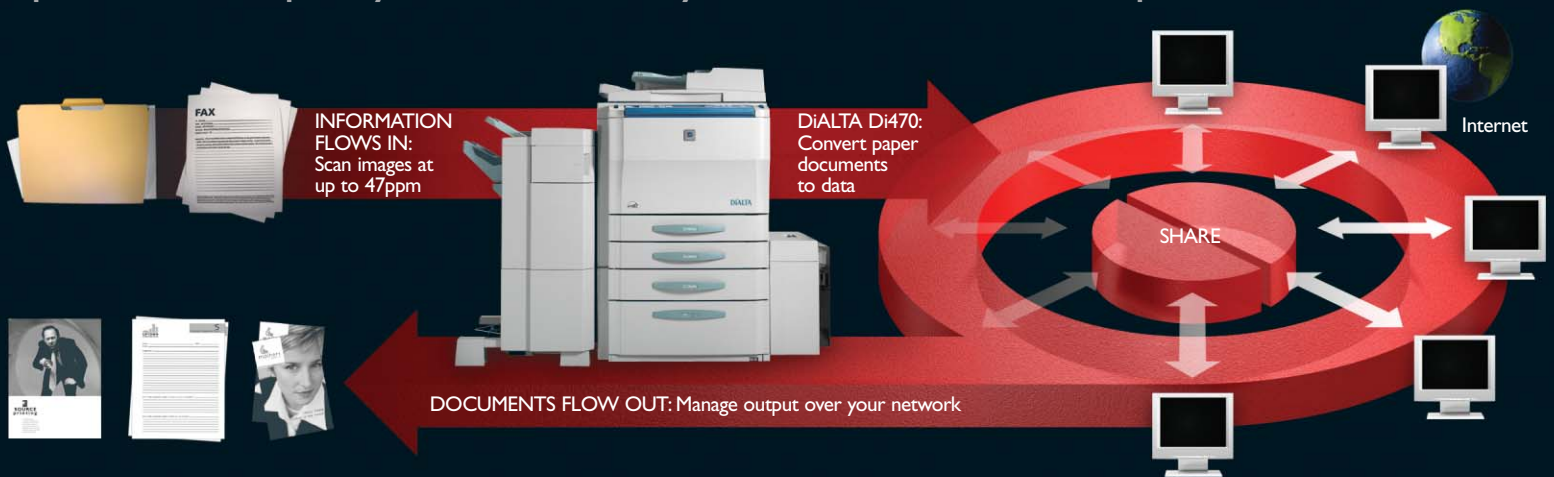
**DiALTA Di470 Digital Printer/Copier/Scanner**

**MINOLTA**

# Di470



**WITH MINOLTA, WORK FLOWS FASTER.** Faster workflow. Stronger connectivity. Lower cost of ownership. A single solution that handles input, output, and everything in between. That's Minolta's DiALTA Di470 Digital Printer/Copier/Scanner. Multifunction productivity lets you print, copy, scan at up to 47ppm. Networking power lets you move information faster. You can share, edit, and redistribute electronically. Print and finish with point-and-click speed and simplicity. And make all your information more productive.

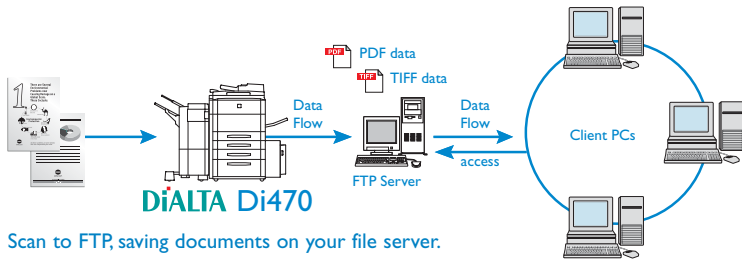


## *The cornerstone of your information flow.*

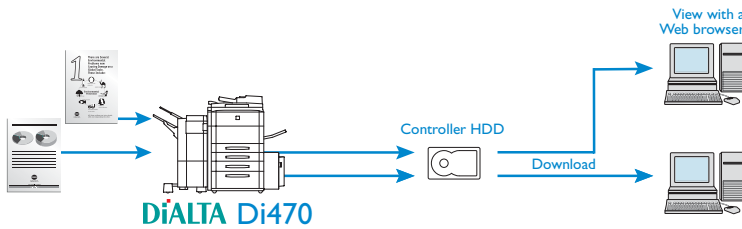
DiALTA Di470 quickly scans and converts paper documents to data – to let you handle information with power and speed. Manage it in a single system. Move it where it belongs. And make it look good in every form you distribute. PageScope software lets you manage scanned documents and PC files. Information can be viewed, edited, and output from any PC on your network. You share files, collaborate on projects, merge data, add value. Then print in-house, with versatile finishing functions. So not only does your work flow faster – your output quality is unsurpassed.



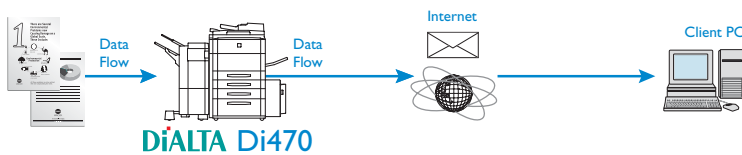
## INFORMATION FLOWS IN.



Scan to FTP, saving documents on your file server.



Scan to HDD, storing documents on your print controller disk drive.



Scan to E-mail, sending documents as e-mail attachments.

### Scanning and sharing is fast and simple.

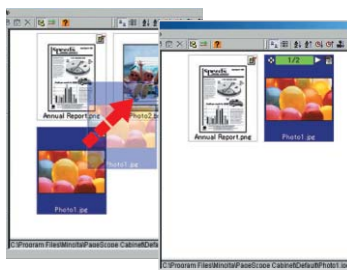
Why fight all that paperwork? The Di470 lets you scan it fast, and get it into your system – nothing gets lost. At up to 47ppm and 600 dpi, you can transform paper documents to PDF or TIFF data files. Where does it go when you scan it? To your choice of destinations, depending on workflow requirements. Scan to FTP, in PDF or TIFF format, for storage and retrieval by network users. Scan to HDD, on the hard disk drive of your Pi4700e\* or Pi5500 print controller, for downloading via Web browser or TWAIN-compliant applications. Scan to E-mail, straight from your Di470 control panel – sending documents as E-mail attachments to any address you've saved to your printer/copier E-mail list. The Pi4700e even has LDAP (Lightweight Directory Access Protocol) support, so that you can select E-mail addresses directly from the E-mail server – real time. Everybody stays in the loop.

### Manage information in a single system.

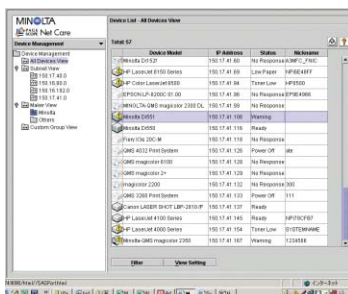
PageScope Cabinet software brings all your scanned documents and images together. Groups them in folders you designate. Converts formats. And combines existing information for concise presentation. You can view files in thumbnail form to save time before you open, forward, or print. You can group files, photos, charts, or illustrations in network folders, so all relevant information is available in one place. And you can send files or print finished documents with drag and drop simplicity.



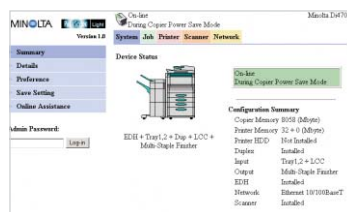
PageScope Cabinet manages documents with thumbnail visuals.



Virtual Folders group relevant files together for sharing or printing.



PageScope Net Care displays all MIB compliant devices on your network.



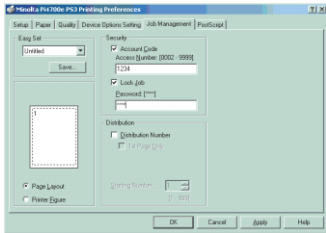
PageScope Light shows status and settings for individual devices.

### Control output devices on your network.

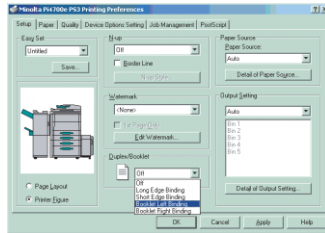
Minolta's PageScope management solution lets you control your devices through standard network protocols. PageScope Light, built into each Di470 controller, lets you access status information through your Web browser – to set up and spot-check your machine in seconds, without leaving your desk. PageScope Net Care gives system administrators a complete picture of every connected (MIB compliant) device. And PageScope EMS Plug-Ins and PageScope NDPS Gateway build bridges to enterprise and high-volume Novell environments. See? It's all connected. You're more productive.



**WITH MINOLTA, OUTPUT LOOKS BETTER.** When it comes time to print what you've created, Minolta lets you output documents at blazing speed. With on-demand cost-savings and convenience. Job queue handling and management. Finishing capabilities that professional print shops might envy. Desktop control. Labor-saving automation. Superior image reproduction. High-volume reliability. All to make your work more professional. And more persuasive.

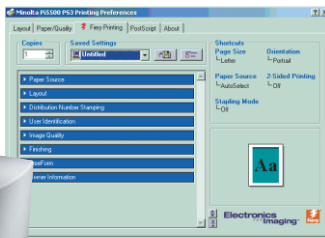
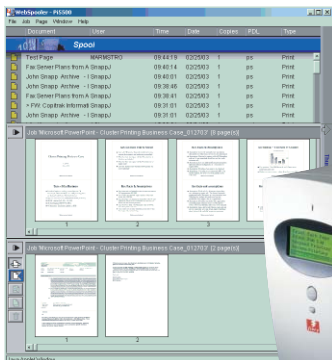


Pi4700e Graphical User Interface makes print control simple.



**Your choice of powerful print controllers.**

Minolta print controllers turn your Di470 into a networkable printer/scanner. The embedded Pi4700e lets you do it all with one low-cost, high-performance solution, driving your Di470 at full rated speed of 47ppm with 600 x 600 dpi image quality. It gives you PostScript and PCL5e/PCL6 capabilities, includes PageScope software for document management and device control, and seamless integration in PC and Mac environments.



Pi5500 Unidriver GUI lets you confirm settings before you print.

The advanced Pi5500 provides all these printing and scanning advantages, plus more: a powerful suite of EFI Fiery® utilities for advanced printing and job management. CommandWorkstation® and WebSpooler™ manage spool, RIP, and print queues. FreeForm™ lets you print master forms with variable data. DocBuilder™ lets you preview, merge, and edit RIPPed files. Jobs from different applications can be combined, printed, and archived for future retrieval. And job logs give you detailed job information that can be exported in spreadsheet form to generate workflow reports.



## DOCUMENTS FLOW OUT.

### Create booklets in-house, on-demand.

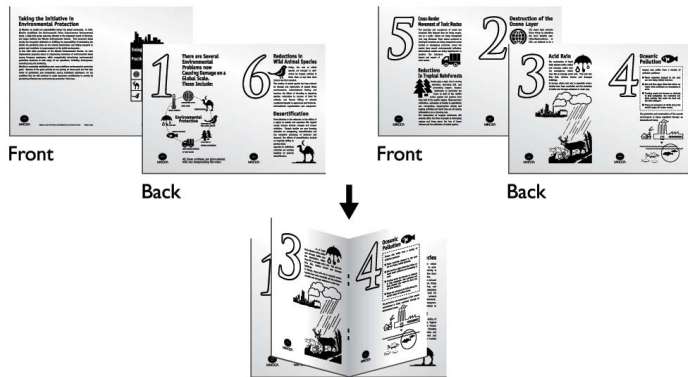
Booklets, reports, proposals, presentations, human resource guides – all the finished documents you used to print outside. With Minolta, you can do them all from your desktop. With a broad array of powerful finishing options. Electronic sorting, in both memory and output bins. Stapling, including corner, 2-point center, 2-point side. Hole-punching, at top or left-hand margin, in two or three positions. Folding, in half-fold, crease, or Z-fold options. All without tedious hand-finishing to slow you down. 7,250-sheet maximum paper capacity with automatic cassette switching lets you work longer, without reloading. And 2-in-1 or 4-in-1 copying, and up to 16-in-1 printing, lets you fit more information on each page.

### Booklet making in-house with crease-fold and center-staple.

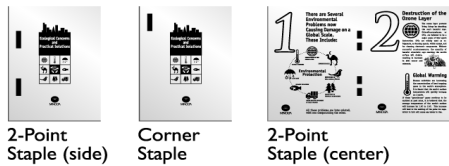
#### Originals



#### Copying + Finishing



### Stapling, hole-punching, and folding – all automatically.



2-Point Staple (side)

Corner Staple

2-Point Staple (center)



Hole Punch (side)

Hole Punch (top)



Half-Fold



Crease



Z-Fold

Time-saving finishing functions let you automatically create reports, manuals, proposals and finished booklets, all with point-and-click speed – and all in-house.

Finishing Functions	FN-5	FN-105	FN-106	FN-503
2-Point Staple (side)	●	●	○	○
Corner Staple	●	●	●	●
2-Point Staple (center)	●	○	○	○
Punch (2 and 3 hole)	●	●	○	2 or 3
Half-fold	●	○	○	○
Crease	●	○	○	○
Z-fold	●	○	○	○

### Beautiful high-resolution image quality.

Minolta's exclusive LIMOS (Laser Intensity Modulation System) technology gives you superior images at true 600 x 600 dpi. With image smoothing, you'll have output equivalent to 1200 x 1200 dpi – a visible improvement in everything you print. And because every original you copy has special needs of its own, Minolta gives you a copy mode to match. Including Auto Mode, that automatically detects fine text and grayscale photos to reproduce each with optimum quality.



Text, photos, or both. Auto Mode automatically detects fine text and grayscale photos – to reproduce each with optimum quality.



## OPERATION IS SIMPLE.

**Di470 DOES IT ALL.** Ask any company that uses Minolta multifunction devices. Our reputation is unsurpassed – for reliability, productivity, and performance. In both hardware add-ons and software solutions, we give you a range of options to keep pace with your workflow. No matter how fast your business grows. Want to be more productive? Then naturally, you'll want more information. So call your Minolta representative today. Or visit our websites listed below.



Large, easy-to-read touch-screen controls are simple and intuitive.

### Simple on-screen menus & controls.

First-time user? No problem. The Di470 has a control panel conveniently laid out for simple push-button operation, walk-up scanning and copying, even scanning to E-mail. Menus are intuitive. Instructions are easy to read. There's even a large rotating dial that tilts the control panel through an angle to suit any working environment – even wheelchair access.



Tilt the control panel 7° to 20° for easy operation from any angle.

For information on Minolta's DiALTA Di470, visit:

[www.minoltausa.com](http://www.minoltausa.com)

For more information on our software to enhance productivity, go to:

[www.minoltausa.com/solutions](http://www.minoltausa.com/solutions)



**1 FN-105 Finisher**

Multiposition stapling and hole-punching of sets of up to 50 sheets.

**2 Electronic Document Handler**

Standard EDH-3, for high-speed scanning with 100-sheet capacity.

**3 Scan Once/Print Many**

One scan, and your original is saved in memory – so you can make multiple copies without re-scanning.

**4 Easy-to-Read Tiltable Display Panel**

Large, simple graphics and logical command sequences make even first-time users more comfortable and more productive.

**5 Multi-Bypass Tray**

Lets you load up to 50 sheets manually or up to 20 sheets of heavy stock and OHP transparencies.

**6 Large Capacity Cassette**

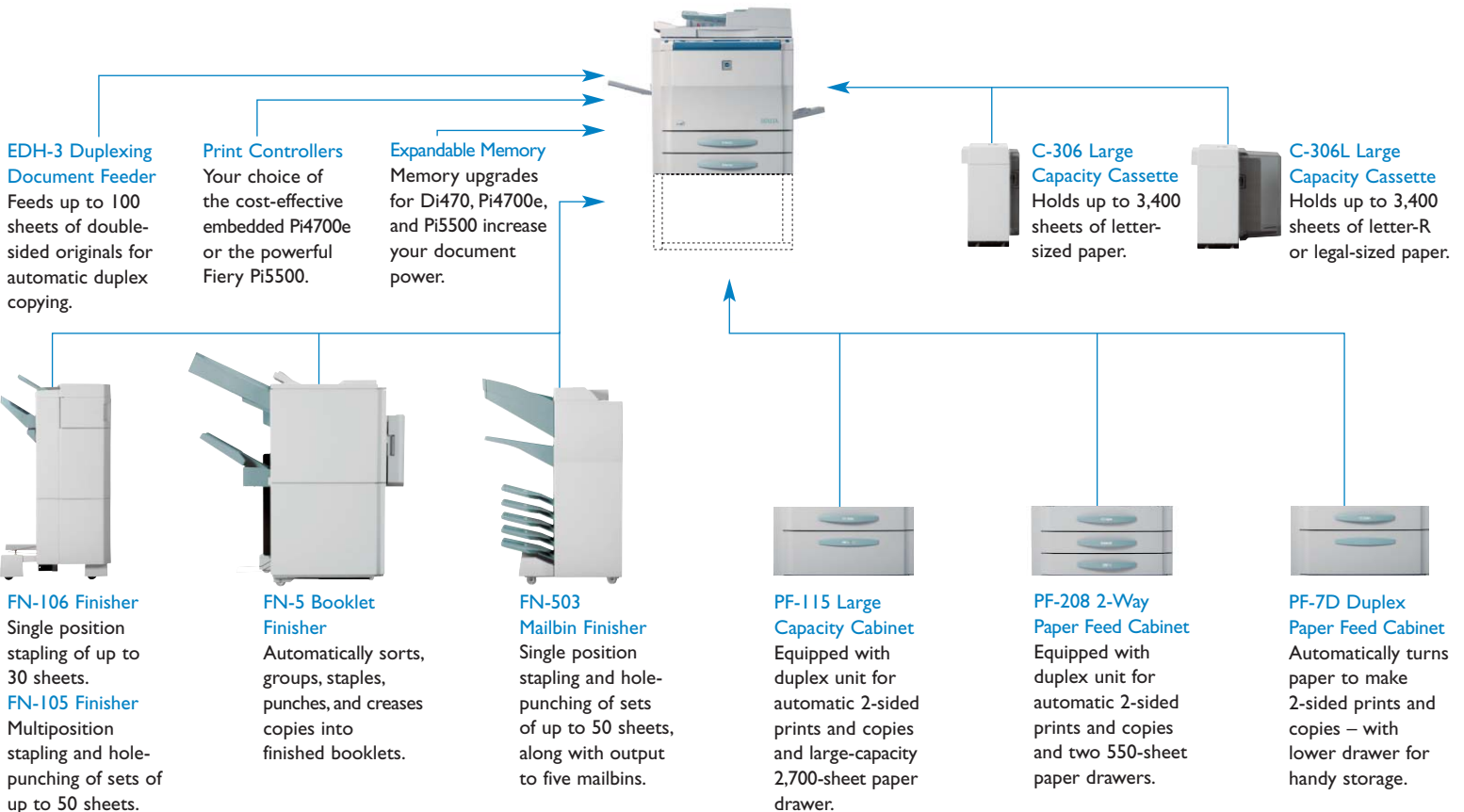
C-306 loads up to 3,400 sheets of 8-1/2" x 11" paper for long print/copy runs. (C-306L also available for 8-1/2" x 14" paper).

**7 Universal Paper Drawers**

Standard top and middle drawers each hold 550 sheets, in sizes from 5-1/2" x 8-1/2" to 11" x 17".

**8 Duplex Paper Feed Cabinets**

PF-115, PF-208, or PF-7D (shown below) provide high-capacity duplex copying.





Always Use Genuine  
Minolta Supplies

**Electronics**  
FOR **Imaging**

<http://www.efi.com>

Design & specifications are subject to change  
without notice.

© 2003 KONICA MINOLTA HOLDINGS, INC.  
All rights reserved. Reproduction in whole or in part  
without written permission is prohibited. Minolta,  
DiALTA, PageScope, and The essentials of imaging are  
trademarks of KONICA MINOLTA HOLDINGS, INC.  
Windows is a registered trademark of Microsoft  
Corporation. Macintosh is a registered trademark of  
Apple Corporation. PCL is a registered trademark of  
Hewlett-Packard Company. Adobe and PostScript are  
registered trademarks of Adobe Systems Incorporated.  
Fiery and Rip-While-Print are registered trademarks of  
Electronics for Imaging, Inc. Command Workstation,  
DocBuilder, Downloader, FreeForm, NetWise, WebLink,  
WebSpooler, WebStatus, and WebTools are trademarks  
of Electronics for Imaging, Inc. All other brands and  
product names are registered trademarks or  
trademarks of their respective owners.

\* Scan to HDD for Pi4700e scheduled for release fourth  
quarter 2003.

\*\* Some features may require options  
which may or may not be available at time of launch.

KONICA MINOLTA BUSINESS SOLUTIONS U.S.A., INC.  
100 Williams Drive • Ramsey, NJ 07446  
[www.minoltausa.com](http://www.minoltausa.com)  
[www.minoltausa.com/solutions](http://www.minoltausa.com/solutions)

## DiALTA Di470 Specifications

**TYPE:**  
Digital Printer/Copier/Scanner

**IMAGING SYSTEM:**  
Laser Electrostatic

**DEVELOPMENT SYSTEM:**  
Minolta NMT (New Micro-Toning) System  
LIMOS (Laser Intensity Modulation System)

**PRINT/COPY SPEED:**  
47 ppm (letter) 8-1/2" x 11" portrait

**IMAGE RESOLUTION:**  
True 600 x 600 dpi scanning  
Equivalent 1200 x 1200 dpi printing

**MEMORY:**  
Standard: 32MB  
Maximum: 64MB

**WARM-UP TIME:**  
99 seconds

**FIRST COPY:**  
4 seconds or less

**COPY QUANTITY:**  
1 - 999 copies (countdown, interrupt capability)

**MAGNIFICATION:**  
Zoom range: 25 - 400%, .1% increments  
Preset reduction: 50%, 65%, 73%, 79%, 93%  
Preset enlargement: 121%, 129%, 155%, 200%

**EXPOSURE MODES:**  
Auto  
Text  
Photo  
Text/Photo  
Manual

**HALFTONE REPRODUCTION:**  
256 gradations

**ORIGINAL SIZE:**  
To 11" x 17" maximum

**PAPER SIZE:**  
5-1/2" x 8-1/2" to 11" x 17"

**PAPER WEIGHT:**  
16 lb. to 24 lb. bond; OHP transparencies

**PAPER SUPPLY:**  
550-sheet universal paper drawers (2)  
50-sheet intelligent bypass

**OPTIONAL PAPER SUPPLIES:**  
550-sheet universal paper drawers (2)  
2,700-sheet tandem drawer (letter)  
3,400-sheet large capacity cassette (letter; also  
available with legal-sized paper capability)

**MAXIMUM PAPER CAPACITY:**  
7,250 sheets

**POWER REQUIREMENTS:**  
120V, 60Hz, 15A

**POWER CONSUMPTION:**  
1.43 kW (max.)

**DIMENSIONS (WxDxH):**  
26-1/4" x 30-1/4" x 40-3/4"

**WEIGHT:**  
249 lbs.

## Di470 Options

Pi5500 Fiery Print Controller  
Pi4700e Embedded Print Controller  
FN-503 Mailbin Finisher (printout/output bins,  
sort, staple, hole-punch)  
FN-5 Booklet Finisher (staple, center-staple  
center-fold, crease-fold, Z-fold)  
FN-105 Finisher (multi-staple, hole-punch)  
FN-106 Finisher (staple)  
C-306 Large Capacity Cabinet (3,400 sheets:  
letter, portrait)  
C-306L Large Capacity Cabinet (3,400 sheets:  
legal or letter-R)  
32MB Memory Upgrade (M32-2)  
Hard Disk Drive

## Pi4700e Specifications

**TYPE:**  
Embedded Print Controller

**PROCESSOR:**  
200MHz

**MEMORY (RAM):**  
Standard: 32MB RAM  
Maximum: 160MB RAM

**HARD DRIVE:**  
10 GB (optional)

**INTERFACE TO NETWORK:**  
Parallel (IEEE 1284 compatibility)  
RJ45 (Ethernet 10/100 BaseT)  
(Token Ring optional)  
Automatic Interface Switching

**NETWORK PROTOCOLS:**  
TCP/IP, IPP, Novell IPX/SPX, NDS (Novell  
Directory Services), Peer-to-Peer (TCP/IP,  
IPX/SPX), LPR/LPD (TCP/IP), HTTP (MIB)

**NETWORK MANAGEMENT:**  
PageScope Net Care/PageScope Light

**PRINT DRIVERS:**  
PCL6 printer driver for Windows 95/98, NT  
4.0, Windows 2000, Windows XP  
PCL5e mini-driver (limited functionality)  
PostScript driver + PPD for Windows 95/98,  
NT 4.0/ME, Windows 2000, Windows XP  
Linux (RedHat, Solaris, SuSE, Turbo)  
Mac PPD Files

**PAGESCOPE PROGRAMS (EMBEDDED):**  
PageScope Light

**PAGESCOPE PROGRAMS (INCLUDED  
IN PRINT CONTROLLER):**  
PageScope Net Care  
PageScope Network Setup  
PageScope EMS Plug-Ins  
PageScope NDPS Gateway  
PageScope Cabinet

**PAGESCOPE PROGRAMS (OPTIONAL):**  
PageScope Router

**OPTIONS:**  
Ethernet Network Interface Card (NIC),  
64MB DIMM, 128MB DIMM, Hard Drive (10GB),  
Token Ring Adapter

## Available Functions\*\*

APS/AMS  
Auto Duplex, Stackless  
Auto/Manual/Photo Exposure  
Auto Tray Switching  
Book Copy  
Booklet Pagination  
Criss/Cross Sorting  
Cover Insertion  
Electronic Copy Monitor  
(100 and 1,000 Accounts)  
Energy Save Mode  
Erase (Border, Center)  
Face-Up or Face-Down Output  
Folding (Half-Fold, Crease-Fold, Z-Fold)  
Hole-Punching (2-Hole and/or 3-Hole)  
Image Repeat  
Image Rotation  
Interrupt (Pause)  
Job Memory (10 Jobs)  
Job Recall  
Job Reserve (Queue) (10 Jobs)  
LDAP  
OHP Interleave  
Scanning (TWAIN, E-mail, Server, and FTP)  
Separate Scanning  
Stamping (Continuous)  
Stapling (7 Position: Corners/Sides/Center)  
Storyboarding (2-in-1, 4-in-1)  
Text, Photo, Text/Photo Modes  
Zoom

## Productivity Enhancing Software Solutions

Back Office Connectivity  
Cash and Credit Card Payment Systems  
Cost Accounting  
Device Management  
Document Management  
Printing On Demand  
Mobile Printing  
— and more

For more information go to:  
[www.minoltausa.com/solutions](http://www.minoltausa.com/solutions)

## Pi5500 Specifications

**TYPE:**  
Fiery Print Controller

**PROCESSOR:**  
INTEL Celeron @ 366MHz

**MEMORY (RAM):**  
Standard: 64MB (DRAM)  
Maximum: 128MB

**HARD DRIVE:**  
10.2GB

**INTERFACE TO Di470:**  
SCSI

**INTERFACE TO NETWORK:**  
Parallel (IEEE 1284 compatibility)  
RJ45 (Ethernet 10/100 BaseT)  
Token Ring (optional)  
Automatic Interface Switching

**NETWORK PROTOCOLS:**  
TCP/IP, Novell IPX/SPX  
Appletalk (EtherTalk)  
LPR/LPD, Token Ring (option)  
Automatic Protocol Switching

**NETWORK MANAGEMENT:**  
SNMP (Simple Network Management  
Protocol)

**FONTS:**  
136 Adobe PostScript 3 Resident Fonts  
46 TrueType Resident Fonts

**PRINT UTILITIES:**  
Fiery DocBuilder™  
Rip-While-Print®  
Fiery Downloader™  
Fiery FreeForm™  
Fiery NetWise™ 2.0  
Fiery WebTools™:  
WebInstaller  
WebLink™  
WebSetup  
WebSpooler™  
Job Log  
WebStatus™  
WebScan

**PRINT DRIVERS:**  
Fiery Unidriver:  
PCL5e printer driver for Windows  
95/98, NT 4.0  
PCL6 printer driver for Windows 95/98, NT  
4.0, Windows 2000, Windows XP  
PostScript 3 driver + PPD for Windows  
95/98, NT 4.0, Windows 2000, Windows XP  
Mac Adobe® PostScript 3 (8.6 or later)  
driver + PPD

**PAGESCOPE PROGRAMS (EMBEDDED):**  
PageScope Light

**PAGESCOPE PROGRAMS (INCLUDED WITH  
PRINT CONTROLLER):**  
PageScope Net Care  
PageScope Network Setup  
PageScope EMS Plug-Ins  
PageScope NDPS Gateway  
PageScope Cabinet

**PAGESCOPE PROGRAMS (OPTIONAL):**  
PageScope Router

**POWER SUPPLY:**  
110 - 220V (autoswitching); 50/60 Hz

**POWER CONSUMPTION:**  
Less than 33.3 W

**DIMENSIONS (WxDxH):**  
6-1/2" x 11" x 12-3/4"

**WEIGHT:**  
21 lbs. 8 oz.

**ACCESSORIES:**  
SCSI cable, AC power cable, parallel cable

**OPTIONS:**  
Network Interface Card (token-ring)  
32MB DIMM